



4F-1, 236, Fu-Te 2nd Rd., His Chih,

Taipei Hsien, 221, Taiwan

TEL:886-2-6616-6692 · 2694-6687

FAX:886-2-2694-6875 · 2694-5097



C180 II Control Panel Changing Process

Version: 1.0

May 20, 2014

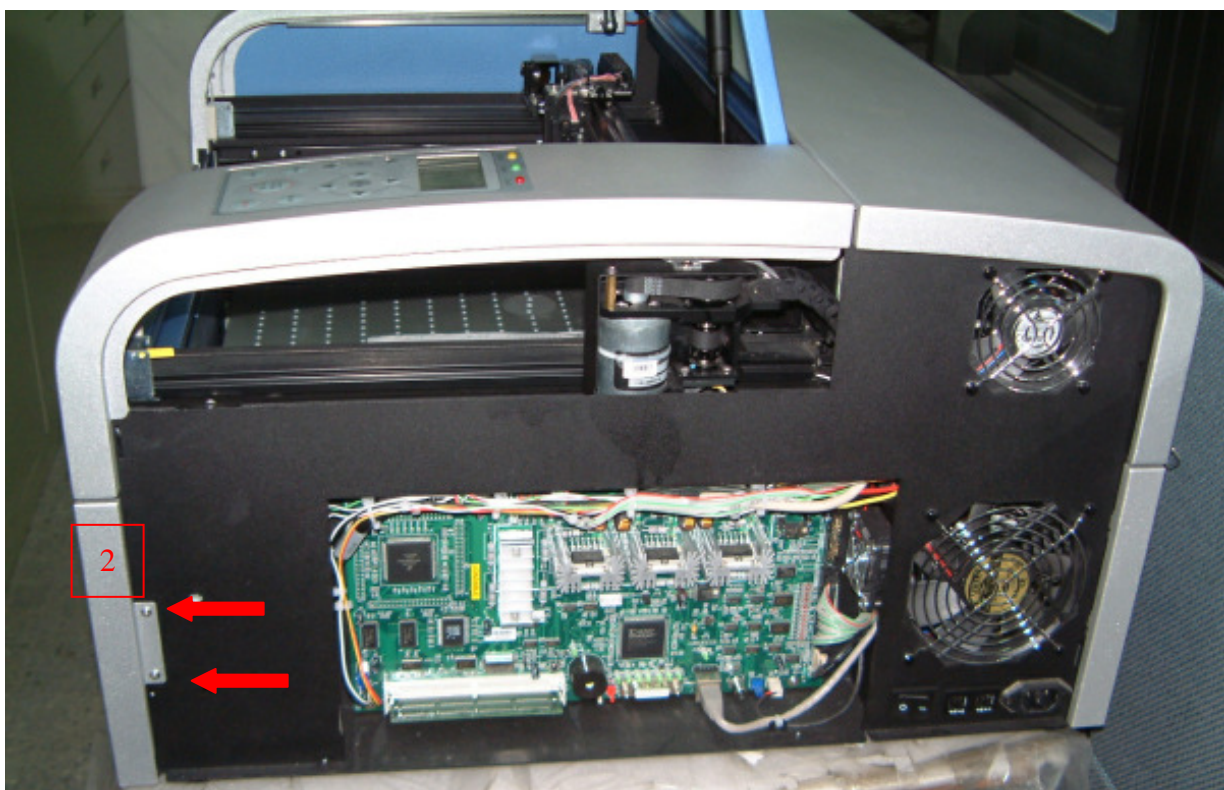
Revision History :

Version	Date	Page	CONTENTS
1.0	May, 20 2014		First release

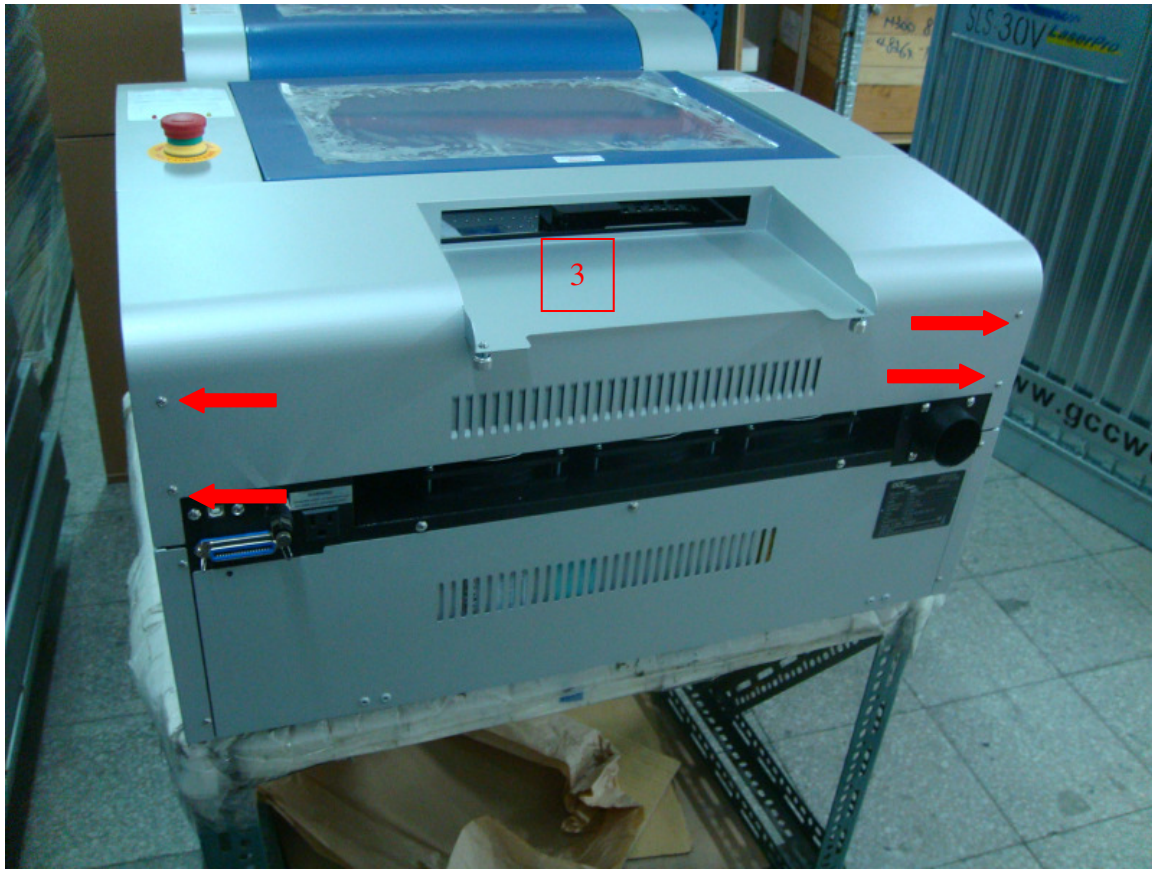
1. Dismount two screws on the bottom of side panel (see red arrows below)



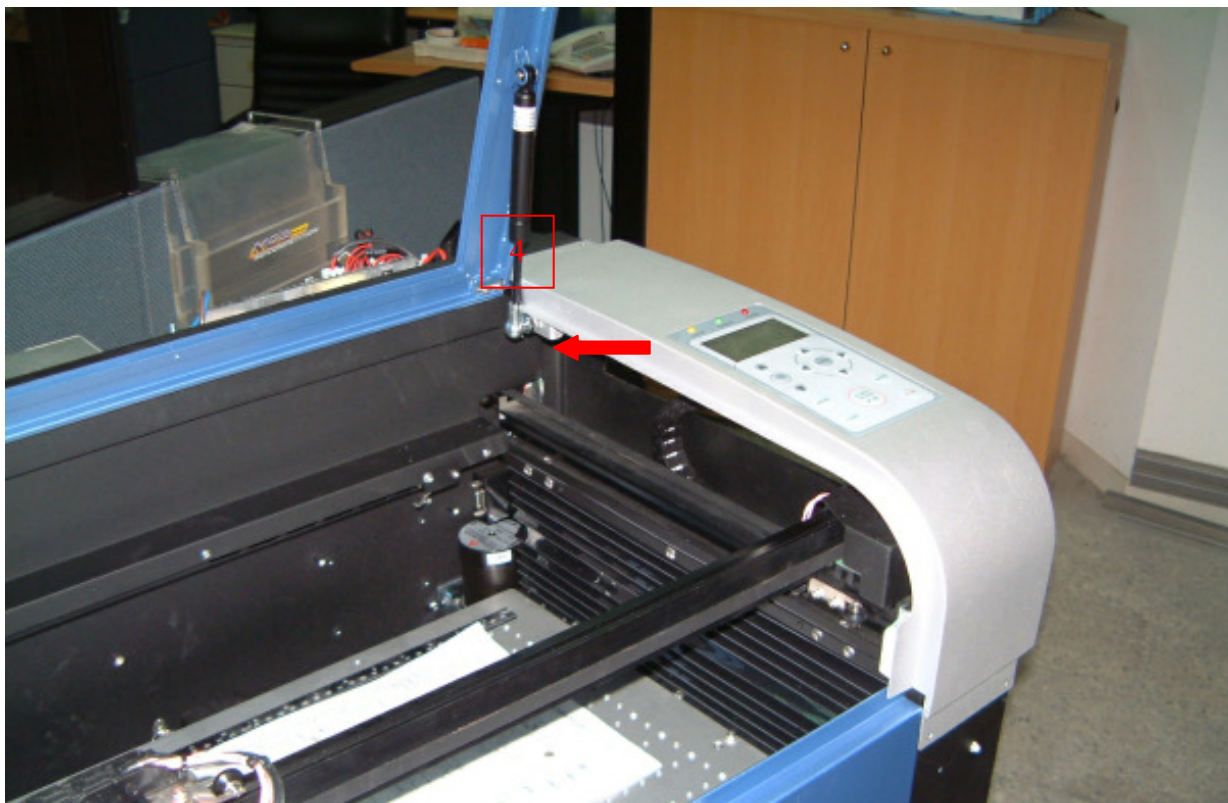
2. Dismount two screws of right-front cover (M3 *2)



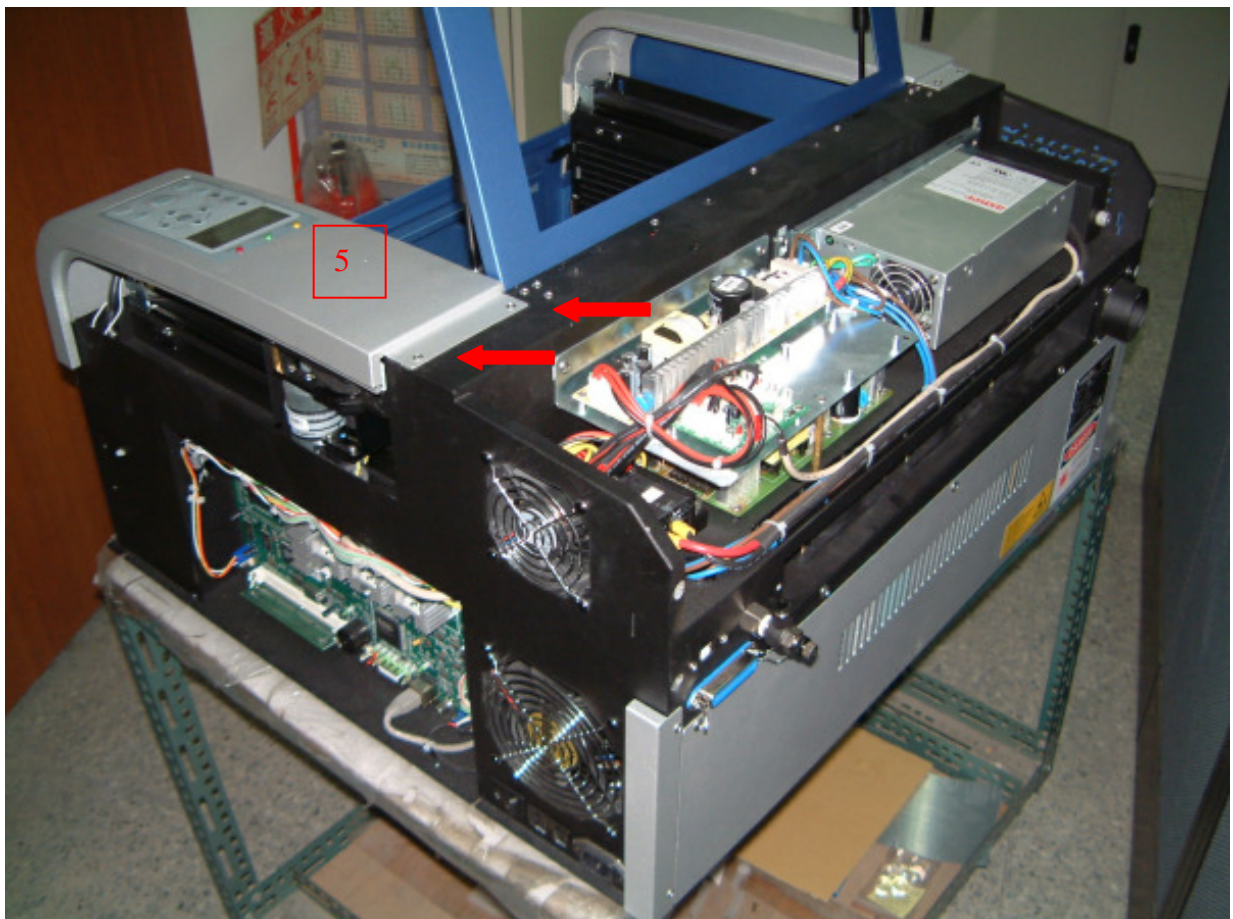
3. Dismount 4 screws of back cover (M3 *4)



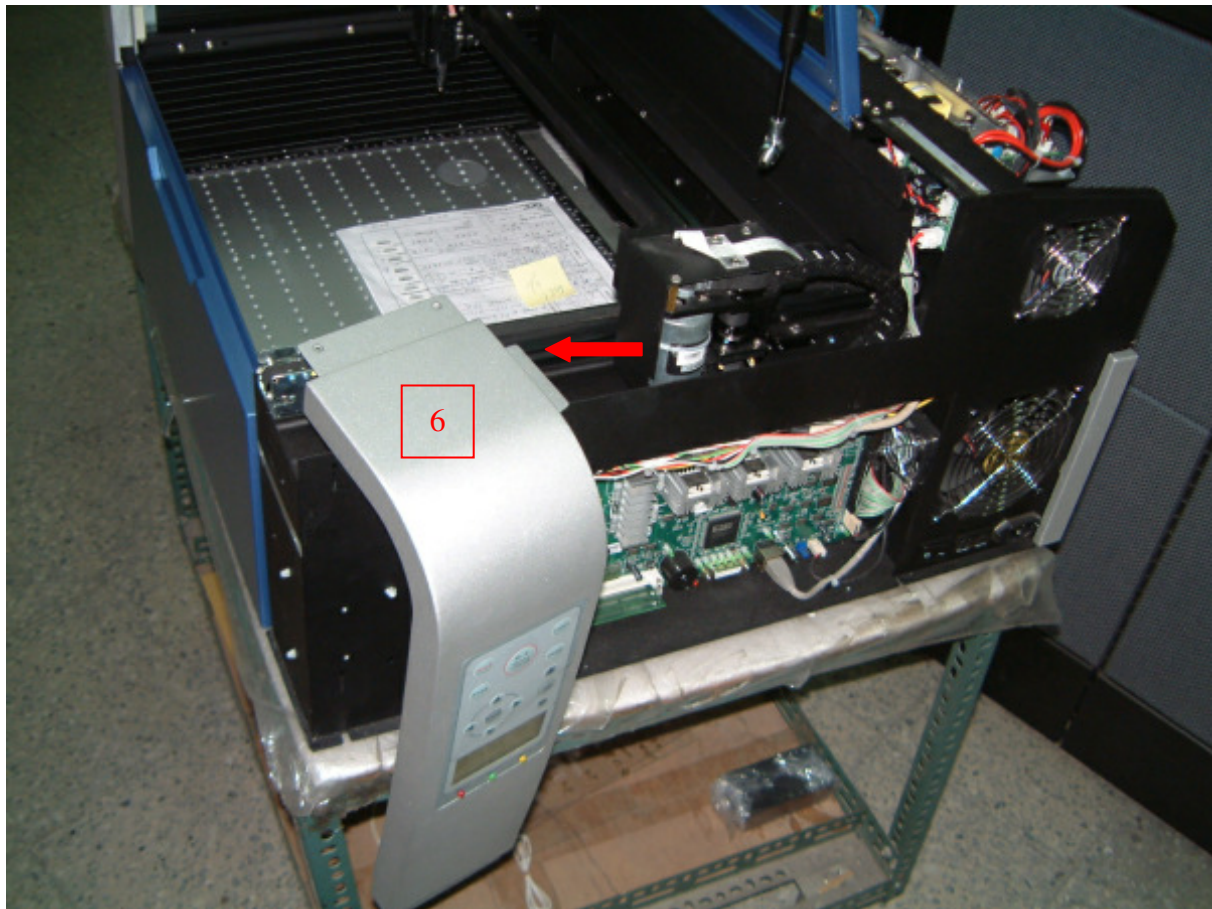
4. Dismount right window cylinder



5. Dismount 4 screws of right top cover (where the control panel locates)



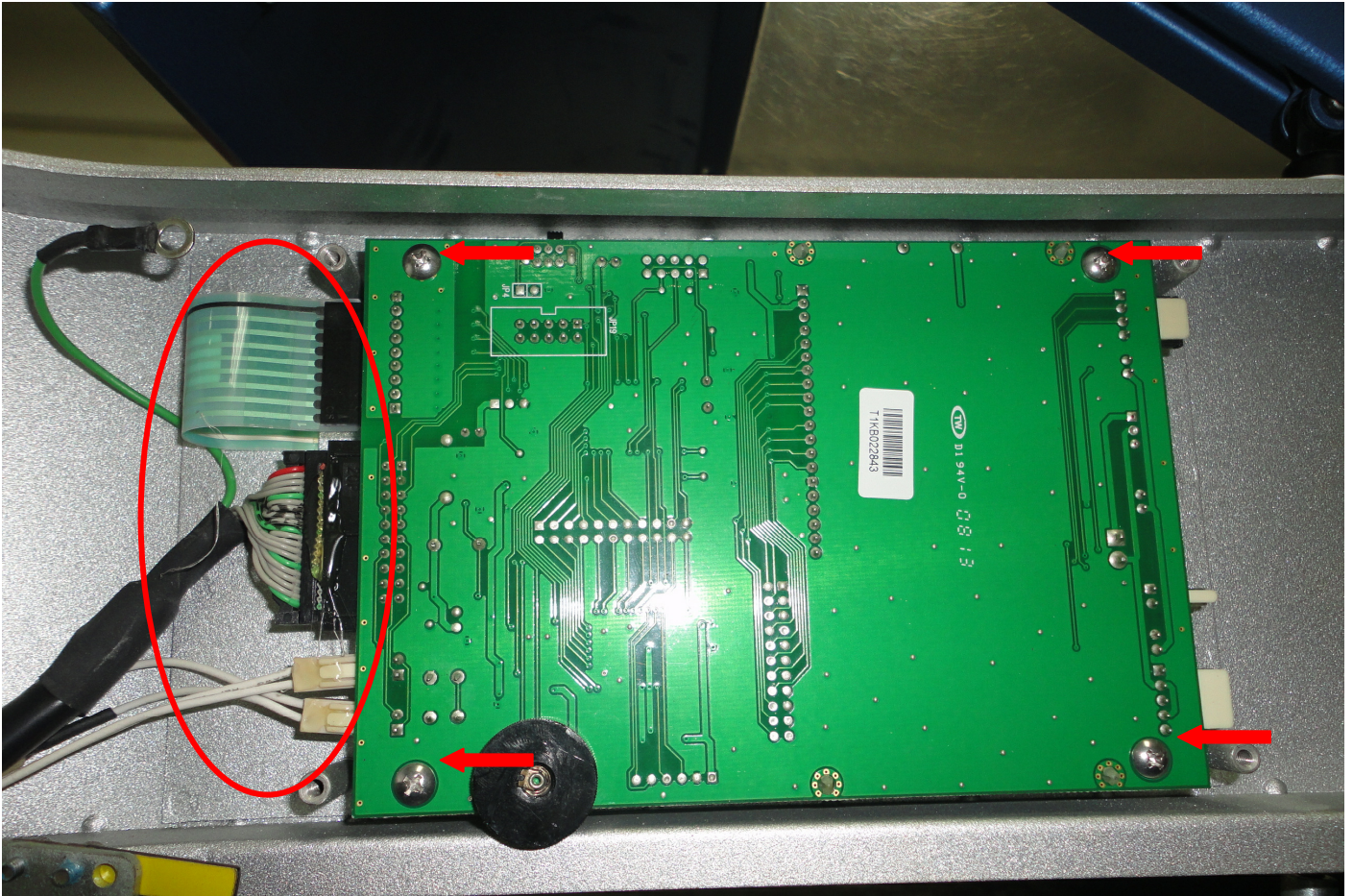
6. Hanging the right top cover to the right side.



7. Dismount 5 screws for cover of control panel and ground cable screw



8. After control panel cover is removed, there are 4 screws needs to be removed and the four cables (in the red circle). Then the control panel can be removed and changed new one.



JORLink  .com

Tel: (336) 288-1613 | eMail: sales@jorlink.com
support@jorlink.com